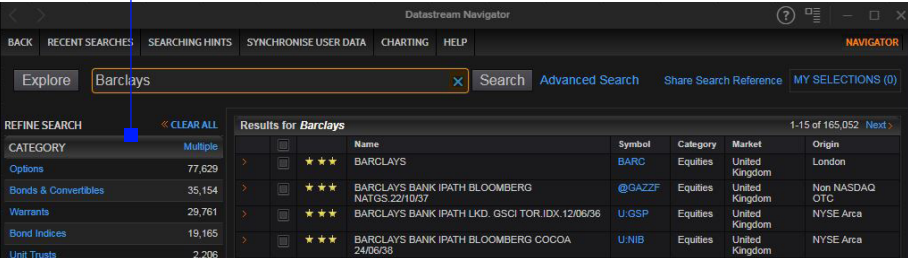


REFINITIV[®] DATASTREAM[®] NAVIGATOR 4.7

Quick reference card

Free text search

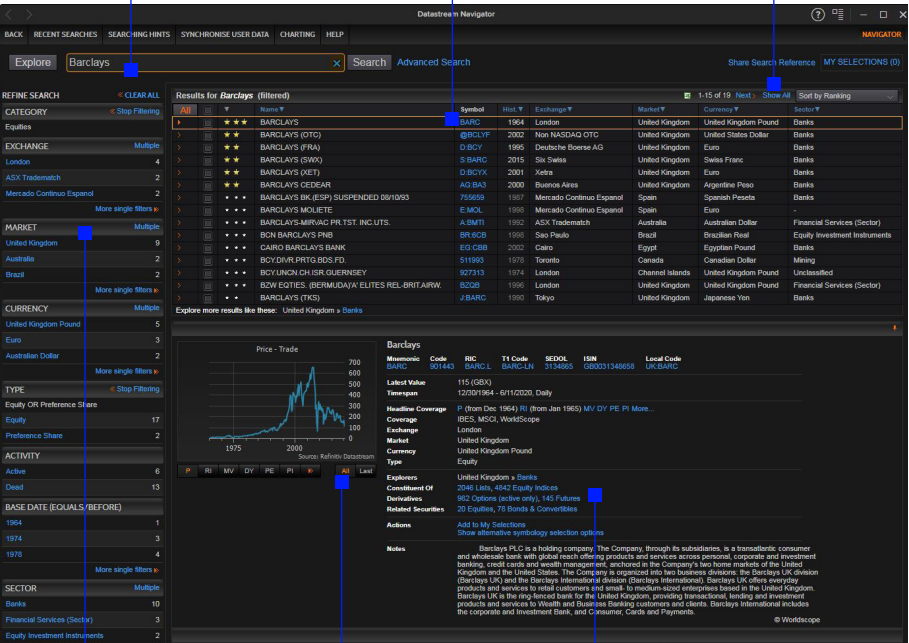
Narrow down your search by filtering to show only one data Category. For example, Equities



Use **x** to clear text or **Clear All** to clear all the filters

Series the search engine has ranked highest are displayed at the top

Show All displays all series, if there are less than 1,000 results



Narrow down your search by filtering on the Exchange, Market, Currency and so on

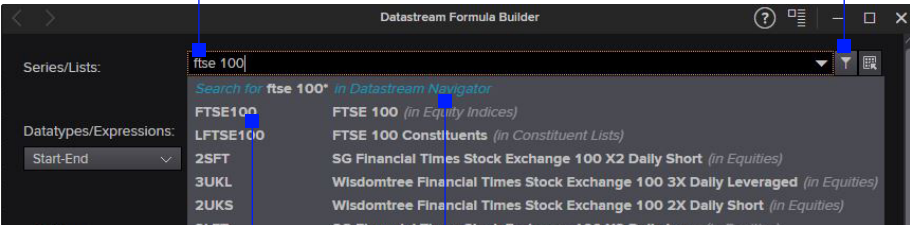
Preview pane shows chart and metadata for the series

See indices the equity is a constituent of

Series suggest

Type in the name of the series you are looking for

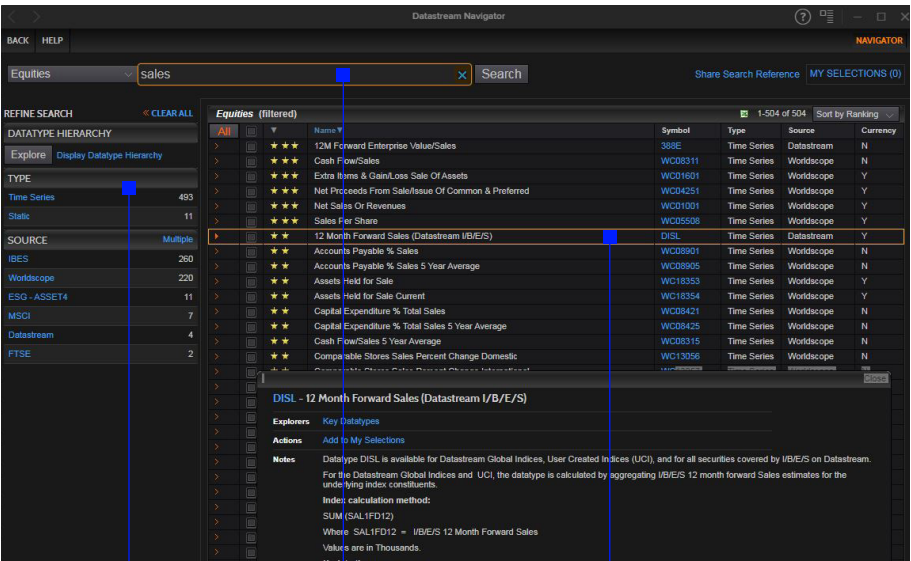
Click on the filter to display the full Navigator interface



Click on **FTSE 100** to select the code

Search for series with "ftse 100" in the Navigator interface

Datatype search

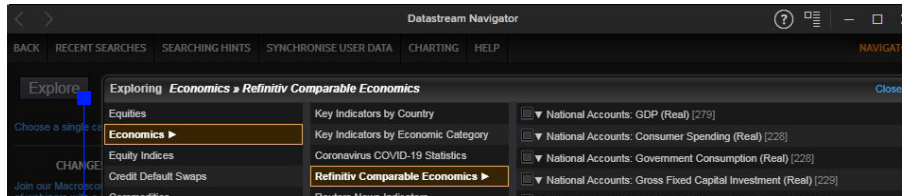


Click on the Hierarchy or the filters to narrow down the results

Enter text, results are ordered by the search engine

Click on the Datatype to see the definition

Explorer page



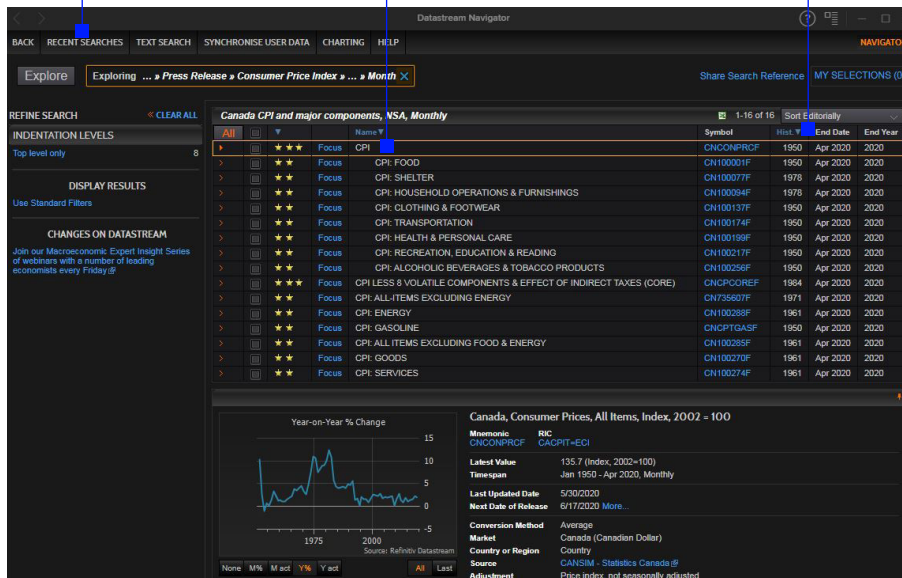
Click the **Explore** link to open Explorer option or use **shift + E** on the keyboard. Use the **Up/Down** and **Right/Left** keys

Results page

See previously reviewed explorers and searches

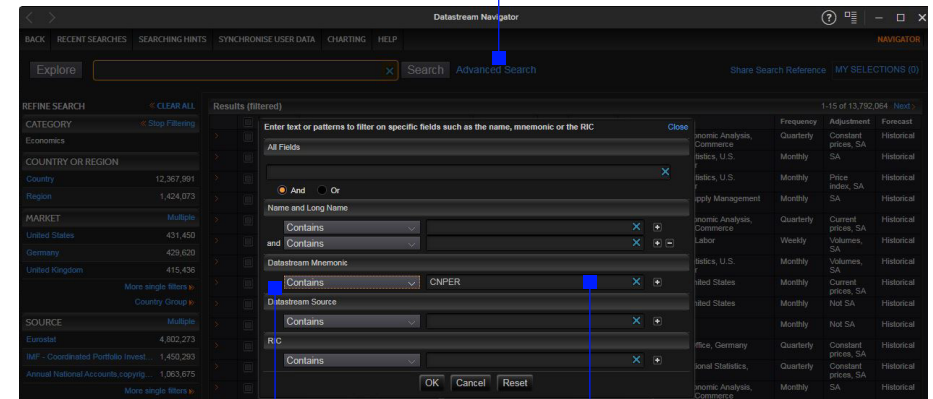
Click to display the preview pane

Reorder by start date, and so on



Advance search page

Select the **Advance Search** link



Select field (mnemonic) and the type of search. For example, Contains, Starts With, and so on

Enter the text to search for. Special characters such as \$ and £ are only supported in the mnemonic and RIC fields

Results page

Search text can be edited directly. For example, change to **CNPER.A**

Or click on **Advance Search** again to make further changes or use other fields

| Name | Symbol | Hist. | Market | Source | Frequency | Adjustment |
|--|-----------|-------|------------------|--|-----------|------------------------|
| PERSONAL CONSUMPTION EXPENDITURES (AR) | USCNPER.D | 1950 | United States | BLS - Bureau of Economic Analysis, U.S. Department of Commerce | Quarterly | Constant prices, SA |
| CONSUMER SPENDING (CVM) | UKCNPER.D | 1955 | United Kingdom | ONS - Office for National Statistics, United Kingdom | Quarterly | Constant prices, SA |
| CONSUMPTION EXPENDITURE - HOUSEHOLDS & NPISH (ESA2010) | EMCNPER.D | 1995 | Euro Zone | European Commission, Eurostat | Quarterly | Constant prices, SA |
| CONSUMER EXPENDITURE | BOCNPER.D | 1991 | Germany | Federal Statistical Office, Germany | Quarterly | Constant prices, SA |
| FINAL DOMESTIC CONSUMPTION: HOUSEHOLDS & NPISH | ITCNPER.D | 1996 | Italy | Istat - National Institute of Statistics, Italy | Quarterly | Constant prices, SA |
| HOUSEHOLD & NPISH CONSUMPTION EXPENDITURE (SA) | SDCNPER.D | 1981 | Sweden | SCB - Statistiska Sweden | Quarterly | Constant prices, SA |
| PRIVATE CONSUMPTION - HOUSEHOLD (CURRENT) | CHCNPER | 1952 | China (Mainland) | National Bureau of Statistics of China | Annual | Current prices, not SA |
| HOUSEHOLD CONSUMPTION EXPENDITURE | BRCNPER.A | 1996 | Brazil | IBGE - Instituto Brasileiro de Geografia e Estatística | Quarterly | Current prices, not SA |
| PERSONAL CONSUMPTION EXPENDITURES (AR) | USCNPER.B | 1950 | United States | BLS - Bureau of Economic Analysis, U.S. Department of Commerce | Quarterly | Current prices, SA |
| PRIVATE CONSUMPTION EXPENDITURE | JPCNPER.D | 1980 | Japan | Cabinet Office, Japan | Quarterly | Constant prices, SA |

Refinitiv is one of the world's largest providers of financial markets data and infrastructure, serving over 40,000 institutions in approximately 190 countries. It provides leading data and insights, trading platforms, and open data and technology platforms that connect a thriving global financial markets community – driving performance in trading, investment, wealth management, regulatory compliance, market data management, enterprise risk and fighting financial crime.

Visit refinitiv.com

@Refinitiv Refinitiv

REFINITIV
DATA IS JUST
THE BEGINNING®